



ZhongLi Instrument Technology Co., Ltd.

Rubber & Plastic Test Machine

Catalogue

website: www.zltester.com

Email: zhongli@zltester.com

Tel: 0086-33657987 ; 0086 13532487540

About Us

Dongguan Zhongli Instrument Technology Co., Ltd. is a rubber and plastic machinery technology enterprise, specializing in R&D/design/manufacturing and sales. Our company has established an independent laboratory, various rubber and plastic experimental equipment is provided for customers to visit/test formulas/proofing. The professional R&D and design team can meet the customized models according to the special non-standard requirements of customers.



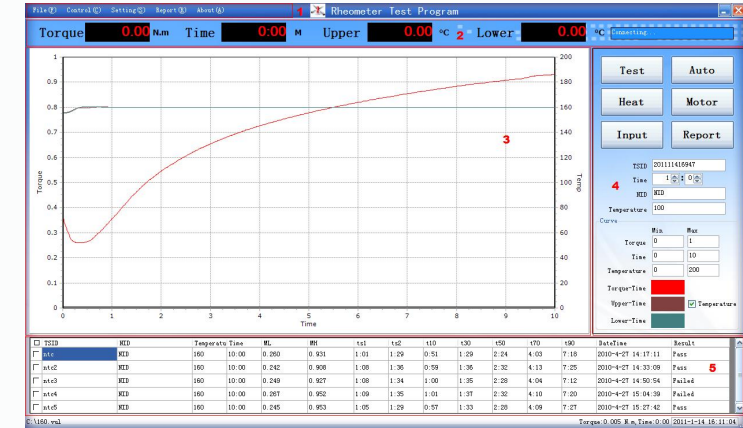
企业证书



ZL-3001 No Rotor Rheometer; Moving Die Rheometer

Meet standards: ASTM D5289-95 ISO6502

Temperature tester	Room temperature to 200°C
Heating speed	room temperature—200°C, about 10 min
Temperature accuracy	≤ ±0.1°C
Temperature resolution	0.1°C
Torque range	0-5N.M、0-10N.M、0-20N.M (option)
Torque resolution:	0.001NM
Motor rotating speed	100 times / min
Rotor Type	Non-Rotor
Die body pendulum	1.7Hz±0.1Hz(100r/min)
Rotor pendulum angle	±0.5°, ±1°, ±3°
Testing time setting	3min--120min, choose freely
Air compression	0.5Mpa--0.65MPa
Ambient temperature	0-35°C
Test result	Printing: date、time、temperature、vulcanization curve、temperature curve、ML、MH、ts1、ts2、t10、t50、Vc1、Vc2.



Remark: If you need more information about ZL-3001B Foam Rubber Rheometer ; ZL-3001C Callipary Rheometer, please kindly contact our sales department.

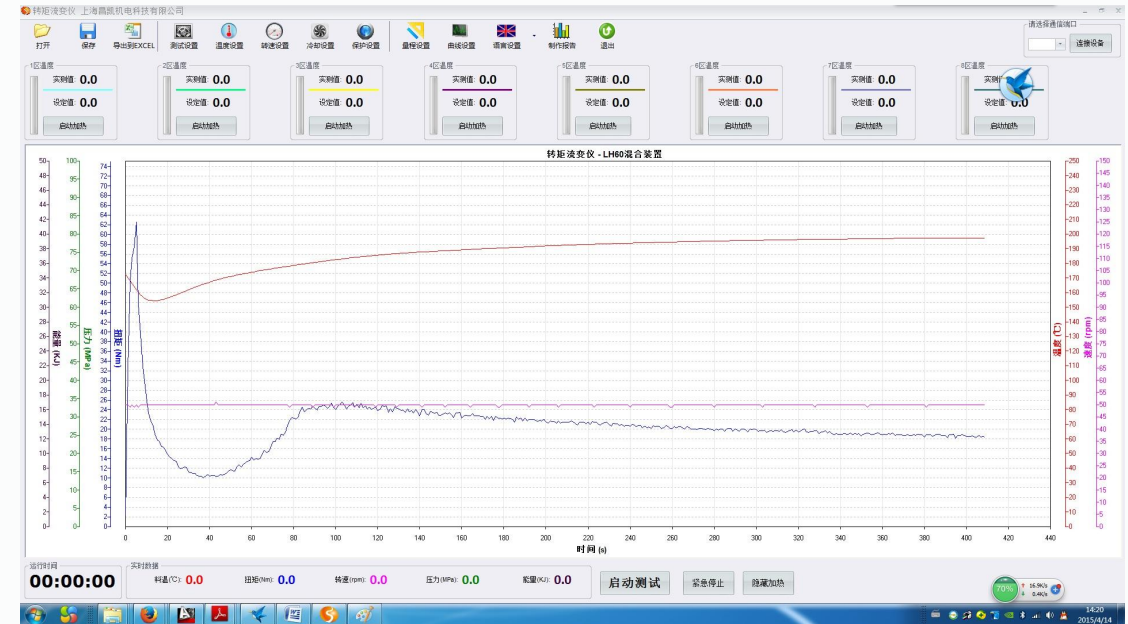
ZL-3001C Torque Rheometer plus mixer

Technical Parameter:



Software:

1. Measuring and control
2. Mixer data processing system
3. Extruder data processing system
4. Polymer melt viscosity measuring data processing system.



Torque Rheometer Main Control:

Motor Brand	FUji Servo motor
Power	4Kw
Power source	Torque Rheometer Main Control
Computer	Dell desktop computer
Temp. control	6 segments
Temp	room temperature to 350°C
Temp. control accuracy	±0.5°C
Cooling control	4 segments of compressed air
Torque measuring range	0~300N.m
Torque check accuracy	0.5%F.s
Rotate speed	2~200rpm(stepless)
Speed accuracy	0.5%F.s
Melt pressure measuring range	0~100Mpa
Melt pressure measuring accuracy	0.5%F.S

Mixer:

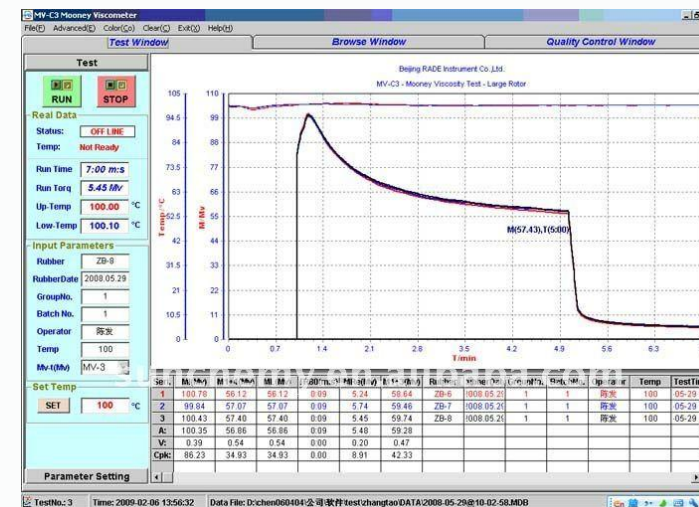
Mixer volume	60ml
Material	STAVAX stainless steel imported from SwedenASSAB
Rotor type	Roller、Banbury、Delta、Cam、Delta、Sigma
Treatment on the rotors	Nitridation
Nitridation depth	≥0.2mm
Temp	room temperature to 350°C
Temp. control accuracy	±0.5°C
Temp. in the mixer cavity	RT-350°C(3 segments of electrical heater)
Temp. control accuracy	±0.5°C
Heating rate	200°C/11minutes
Gear ratio	3:2
Torque range	0-300Nm
Temp. sensor	K-shaped thermocouple

ZL-3002 Mooney Viscometer

Standards:

ASTM-D2084,ASTM-D5289,ISO-6502, ASTM-D1646

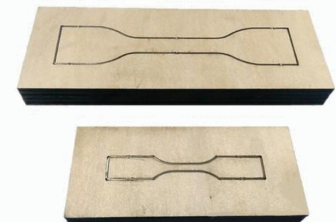
Control temperature range	Normal temperature~200°C
Temperature display resolution	0.01°C (0.1 °C common type of imported temperature controller temperature)
Temperature control accuracy	±0.3°C
Calibration accuracy	Mooney value ±0.5
Rotor speed	2 rotation/ min ±0.02rotation/ min
Torque range	Mooney value 0 ~ 200
Torque resolution	Mooney value 0.1
Print content	Date, time, temperature, Mooney scorch curve and MV,T5,T35,T3,T18,@15,@30
Power	50HZ, ~ 220V±10%



ZL-8001 & ZL-8003 Rubber tensile strength testing machine

Meet standards: ASTM D412-1998A ISO 37:94

Model Number	ZL-8001	ZL-8003
Max load	10KN, 20KN	5KN
Accurate grade	1 % /0.5 %	
Effective measuring range	0.2% ~ 100% (1grade) /0.4% ~ 100% (0.5 grade)	
Measuring accuracy	Display the value $\pm 1\%$ /Display the value $\pm 0.5\%$	
Tester resolution	Max load 1/200000, regardless of inside and outside, constant the resolution	
Effective testing width	380mm(customizable)	
Effective Tensile stroke	800mm;1000mm;1200mm, (customizable)	
Range of testing speed	0.001 ~ 200mm/min ; 500mm/min (1000mm/min is option)	
Accuracy of displacement measurement	Tolerance: $\pm 0.5\%$ / tolerance: $\pm 0.2\%$	
Deformation of measured system (according to the requirements)	Min span :10mm, Max range of deformation : 800mmExtended deformation : Min span: 25mm、 50mm、 100mm, range of deformation : 5mm、 10mm、 25mm	
Accuracy of measured deformation	Tolerance : $\pm 0.5\%$ (according to requirement of customer to choose the larger or small deformation)	



ZL-3003 Rubber Low Temperature Brittleness Tester

Technical parameters :

Model	ZL-3003 Rubber Low Temperature Brittleness test bench
Test temperature	-70 Centigrade--0c\Centigrade
Impact speed	2m/s \pm 0.2m/s
temperature fluctuation	$<\pm$ 0.5Centigrade
distance between the center of impact-orto the bottom of gripper	8 \pm 0.3mm or 11 \pm 0.5mm(For rubber) 3.6 \pm 0.1mm(For plastic)
Outside size	720mm*700mm*1380mm
Power	1100W
Cold well volume	700ml



ZL-3005 Rubber-Weiss Plasticity Testing Machine

Technical parameters :

Model	ZL-3005
Temperature	70C+/-1C (it can be adjustable within 100c)
Measuring range	0.01~25 mm
Accuracy	\pm 0.01 mm
load	49 N \pm 0.05 N
Temperature accuracy	\pm 1 Centigrade
Counter	LCD display 0~9, 999
Volume	(inside W*D*H): 35cm *35cm *35 cm
Weight	53 kg
Power	220V, 5A



ZL-3004 DIN Abrasive Tester

Technical parameters :

Roll length:	150mm
Abrasion stroke	40 ± 0.2M
Horizontal displacement:	4.2mm / rotate
Stroke	20m/40m presetting
Grips lateral displacement	4.2 ± 0.04rpm
Idler wheel speed	40 ± 1cpm
Measuring way	Auto/Manual presetting
Load	2.5 ± 0.1N, 5 ± 0.1N, 10 ± 0.1N
Specimen size	dia 16mm, thickness at least 6mm
Emery cloth Specification:	60 #, seam is less than 2mm.
Sand paper	60 Germany
Dimension	95*66*31cm
Power	220v 50hz



ZL-3023 Pneumatic Specimen Cutting Machine

Technical parameters :

Power	1 Ton	3Ton
Movie force source (prepared by customers)	More than 5 kg/cm*cm	
Pneumatic cylinder stroke	50mm	
Max cutting thick	10mm	15mm
Effective used area(W×D×H)	300 × 180 × 80 mm	400 × 200 × 100 mm
Volume(W×D×H)	45 × 30 × 67 cm	45 × 40 × 88 cm
Weight	59 kg	120 kg



ZL-3008 Falling Ball Impact Test Machine



Technical Parameters :

Model	ZL-3008A
Ball Weight	112g, 198g, 225g, 357g, 533g (optional 1042g, 2280g)
Drop height	20 ~ 1800mm
Drop height scale	minimum instruction 1cm
Machine Size	W400 x D450 x H2200mm
Machine Weight	40kg
Power source	1 ϕ , 220V, 5A or designated



Technical Parameters :

Model	ZL-3008B
Measuring range	A:50~2000g
Measuring accuracy	0.1g (0.1J)
Test condition	23°C,50%RH (standard)
Sample clamping	pneumatic
Sample size	>150mm×150mm
Power	AC220V50Hz
Net weight	70kg
Contour dimension	A method:500(L)mm×450(B)mm×1320(H)mm B method: 500(L)mm×450(B)mm×2160(H)mm
Standard configuration	A method configuration; B method configuration
Option	(Note: air users should bring by users)



Model	ZL-3008C
Maximum impact energy	30J
Measurement Method	A method, B method (optional)
Test Range	A method: 50 ~ 2000g B law: 300 ~ 2000g
Young Master unit off half diameter	A method: 38MM, B method: 50MM
Test height	0.3-1.8M manually adjustable
Test conditions	23 °C 50% RH (standard)
Specimen clamping	Pneumatic
Fixture inner diameter	125MM



Model	ZL-3008E
1. Maximum impact energy	300J
2. Hammer mass	0.25kg-15.000kg, 0.125kg / increment
3.The radius of curvature of the hammer head	d25, d90 or R5mm, R10mm, R30mm, R50mm
4.Impact height	50mm-2000mm
5.impact height error	± 2mm
6.Sample specifications	Φ16mm-Φ400mm (can increase the test pipe diameter according to demand)
7.Power	220V, 50Hz
8.Size	800 × 800 × 3370mm
9.The whole machine weight	330kg

ZL-3012 Shore Hardness Tester



Technical parameters :

Type	Indentor Shape	Range	Resolution
A	Flat cone point (0.79 mm), 35° Included Angle suitable for medium Hardness Plastic, Rubber, Leather, Multi- grease, Wax etc.	0~100HA	0.5HA
C	2.5 mm Spherical It's suited for measuring Foam, Sponge, Shoes with incorporates material, etc.	0~100HC	0.5HC
D	Sharp cone point (SR0.1 mm), 30° Included Angle It's suited for measuring Hard Rubber and Plastics such as Thermo Plastics, Flooring and Bowling balls.	0~100HD	0.5HD

ZL-3018 Two Roll Mill

Technical parameters:

Model		ZL-3018-76	ZL-3018-120	ZI-3018-160	ZL-3018-200	ZI-3018-230	ZI-3018-300	ZL-3018-400
Diameter of roll	mm	76	120	160	200	230	300	400
Length of roller face	mm	300	350	350	500	650	650	900
Mixing Capacity	kg	0.002-0.6	0.002-2	0.002-2.8	0.002-5	0.005-10	1-15	5-30
Front roll surface speed	rpm	19	19	19	19	19	19	19
Friction ratio		1:1.30	1:1.35	1:1.35	1:1.35	1:1.27	1:1.27	1:1.27
Roll gap range	mm	0-3	0-6	0-6	0-8	0-12	0-12	0-15
Driving Power	KW	1	1.5	2.2	7.5	11	30	37
Heating Mode	Electricity heating , Oil Heating (option)							
Cooling Mode	Water Cooling (option)							
Roll Temperature	Room temperature -- 300°C							
Roll Hardness	HRC 50 ~ 68							
Temperature Accuracy	± 2 °C (we adopt the high accuracy PID micro computer controller)							
Safety device	It have 6 safety buttons and safety guard is option							
Machine weight	kg	160	460	660	860	1960	2960	3800
Overall dimension	mm	1100x400x1180	1100x550x1380	1200x650x1380	2200x750x1380	2200x950x1580	2600x950x1580	5295x1789x170
Power	380V 3 phase 50-60hz							
option	PLC controller (Optional) ; Conveter for speed adjustment (Optional)							





2 inch small tabletop Open Two Roll Mill

Size
Rotational Speed
Material
Customizable



9 inch water-cooled Open Mixing Mill



12 Inch Two Roll Mill

3 Inch Electric Heating Two roll mill 4 Inch Ceramic Drum Two Roll Mill 12 Inch Hot And Cold Type Two Roll Mill With Safety Warning Light



Customization Support

Size: 2 inch/3 inch/4 inch/6 inch/8 inch/9 inch/12 inch/14 inch/16 inch

ZL-3018B Rubber / Plastic Two Roll Mill

Technical parameters:

Model		ZL-3018-200	ZL-3018-230	ZL-3018-300	ZL-3018-400
Diameter of roll	mm	200	230	300	400
Length of roller face	mm	500	650	650	900
Mixing Capacity	kg	0.002-5	0.005-10	1-15	5-30
Front roll surface speed	rpm	19	19	19	19
Friction ratio		1:1.35	1:1.27	1:1.27	1:1.27
Roll gap range	mm	0-8	0-12	0-12	0-15
Driving Power	KW	7.5	11	30	37
Heating Mode	Electricity heating , Oil Heating (option)				
Cooling Mode	Water Cooling (option)				
Roll Temperature	Room temperature -- 300°C				
Roll Hardness	HRC 50 ~ 60				
Temperature Accuracy	± 2 °C (we adopt the high accuracy PID micro computer controller)				
Safety device	It have 6 safety buttons and safety guard is option				
Machine weight	kg	860	1960	2960	3800
Overall dimension	mm	2200x750x1380	2200x950x1580	2600x950x1580	5295x1789x170
Power	380V 3 phase 50-60hz				



ZL-3011 Lab Dispersion kneader

Technical parameters:

MODLE	UNIT	ZL-3011 -0.5	ZL-3011 -1	ZL-3011-3	ZI-3011-5	ZL-3011-10	ZI-3011-15	ZL-3011-20
Volume	L	0.5	1	3	5	10	15	20
Drive motor	kw	1	2.2	5.5	7.5	15	22	30
Turning motor	kw	0.2	0.2	0.4	0.4	0.75	1	1.5
Turning angle		110	110	110	110	110	110	110
Air compres sor	kw	2.2	2.2	2.2	2.2	5.5	5.5	5.5
Water cooling	mpa	0.2-0.4	0.2-0.4	0.2-0.4	0.2-0.4	0.2-0.4	0.3-0.4	0.3-0.4
Electric heating	Kw	0.8	0.8	1.2	1.8	1.9	2.1	4
Weight	KG	500	800	1000	1200	2300	2800	4500
Remark: Electricity heating & Water cooling (option)								



ZL-3011B Rubber internal mixer

Technical parameters:

MODLE	UNIT	ZL-3011 -55	ZL-3011 -75	ZL-3011-110
Volume	L	55	75	110
Batch input	kg	50-100	60-85kg	100-130
Drive motor	kw	75	75	110
Turning motor	kw	3	4	0.4
Turning angle		140	140	110
Air compressor	kw	5.5	7.5	7.5
Water cooling	mpa	0.3-0.4	0.4-0.4	0.2-0.4
Electric heating	Kw	2.2	3.75	5.5
Weight	KG	6500	7500	8000
Remark: Electricity heating & Water cooling (option)				



Laboratory Hydraulic Hot Press Machine



Manual Hydraulic Press Machine



Model : 20T/30T/50T/
100T/150T/200T
Single layer double layer
optional can be customized



Vacuum Hydraulic Hot Press Machine

ZL-3022A Laboratory Hydraulic Hot Press Machine

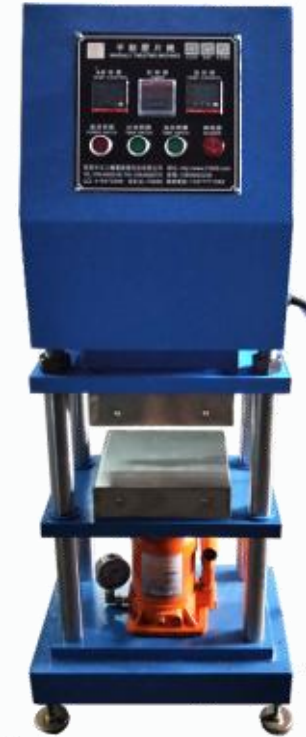
Capacity	10~30ton (Option)
Temp. Range	Room temp. ~ 300°C
Temp. Controller	LED Indicator, press key set input, the value indicate output
Timer	LED display, time range 0.1S ~ 99min ~ 9.9hr
Heating type	Electrical Heating module
Hot pressure plate	300×300mm (can be customized)
Cold pressure plate	300×300mm (can be customized)
Distance of pressure plate	100mm
Pressure material	SKD chromium-molybdenum alloy
Pressure surface	Mirror chrome plated
Cooling temperature scope	Room temp. ~ + 5°C
Cooling type	Tap water cooling/compressor cooling water(optional)
Oil pressure system	The proportion hydraulic pressure current capacity loop circuit control system, the GPY oil pump driver high performance electroencephalographic
	matching high accuracy non resistance piston of oil cylinder carry
	out constant speed rate control mode, can p reelection one, two
	times pressure and time.
Oil cylinder stroke	Max 200mm
Oil cylinder speed	11mm/s
Pressure gauge	0 ~ 350kg/sq.cm



ZL-3022B Manual Hydraulic Press Machine

Technical parameters:

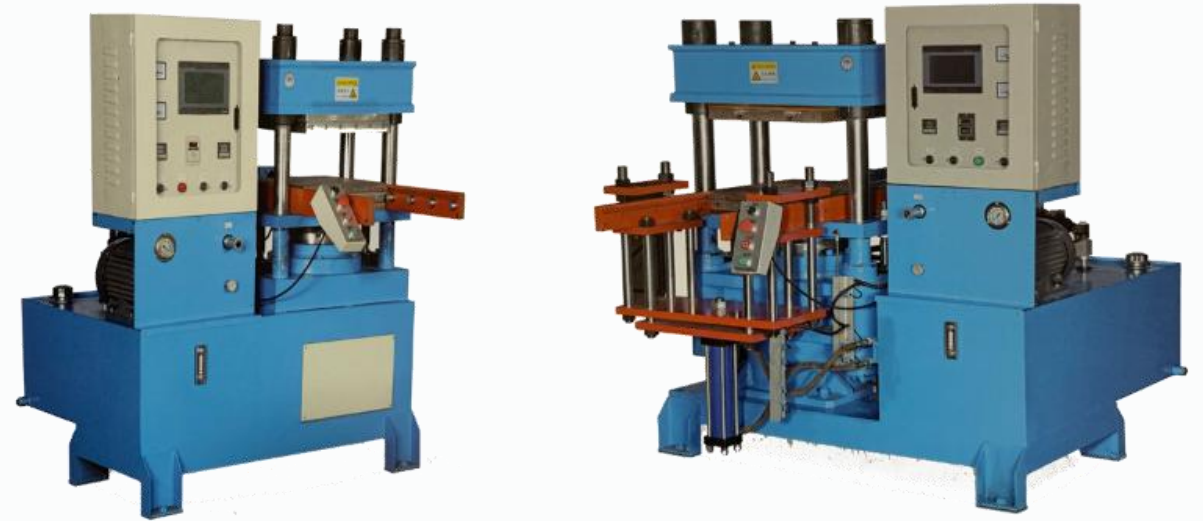
Capacity	0-20T
Temperature range	Room temperature ~ 300°C
Temperature controller	Microcomputer high-precision LED display, key setting input, numerical display
Chronograph	LED display, high precision time range: 0.1s ~ 99min ~ 9.9hr
Temperature control method	P.I.D. microcomputer control performance is stable and temperature control is accurate.
Heating device	The heating mold is equipped with cylinder type, scientific matching of hole position, quick temperature generation, long service life and easy maintenance
Heating time	It takes about 15min at room temperature ~ 170°C
Hot pressing plate	220×220mm high temperature resistant SKD imported steel plate, surface carbonization and quenching, fast heat conduction, pressure parallel and unchanged
Cylinder stroke	Max 160mm
Pressure gauge	0 ~ 200kg/sq.cm
Volume volume	(W×D×H)420×450×1200 mm
Power source	AC220V, 16A
Weight	about 260kg



ZL-3022C Flat vulcanizing machine

Technical parameters:

Hot plate size	450*450 or customizable
Hot plate spacing	200mm
temperature range	RT-350°C
heating method	Electric heating
System pressure	18Mpa
Mold opening method	Automatic
Clamping stroke	250mm
Diameter of main column	250mm
Working level	Upper and lower
Greatest pressure	60T/100T/150T customizable
Power	13KW
Machine structure	Four pillars
Voltage	380v 50hz



ZL-3017A Lab Single Screw Extruder

ZL-3017B Twin screw extruder

Application:

1. ABS filament extruder.
2. PLA filament extruder.
3. Small diameter PVC/PA/PC tube extruder.
4. Window edge band extruder.
5. Soft PVC profile extruder.
6. Plastic pellets making.
7. Rattan making.

Main technology:

Screw diameter	25mm
Screw diameter ratio	25: 1
Screw compression	3
Motor Power	1KW
Main motor speed controller	Frequency converter(Holip Brand)
Barrel heating type	Adopt stainless steel with electric heating



Melt Flow Rate Meter

ZL-3013 MFR ZL-3014 MVR

Meet standards: ASTM D3364 JB/T5456 ISO 1133

Temperature range	0°C-450°C
Temperature accuracy	±0.2°C
Temperature uniformity	±1°C
Temperature resolution	0.1°C
Timing Accuracy	0.1S
Displacement accuracy	0.01mm
Diameter of barrel	Φ2.095±0.005mm
Length of discharge port	8.000±0.025mm
Diameter of charging cylinder	Φ9.550±0.025mm
Weight accuracy	±0.5%
output method	Mini auto printout
Cutting method	Automatic cutting by hand
Test load	A total of 8 levels, 8 sets of weights



ZL-3026 Rubber Compression Rebound Tester



Technical parameters :

Model	ZL-3026
Number of specimen	3~27 pcs
Max capacity	500kgf
dialgage	50mm
Measure thickness of specimen	9.52mm
Specimen size 1:Method 1:	foam Ø29.0 mm, Non-foaming material Ø14.5 mm
Specimen size 2:Method 2	foam 25.4 × 25.4 mm;Non-foaming material Ø12.7 mm
Volume	Ø23cm, H 65cm
Weight	40kg

ZL-3027 Permanent Compression Distortion Tester

Standards:

ASTM-D395, ASTM 3574, GB-7759, JIS-K6262



Technical parameters :

Model	ZL-3027
Sample	A type: diameter 29mm, height 12.5mm
	B type: diameter 13mm, height 6.3mm
height limiter	A type: Compression ratio of 25% mm 9.3-9.4 4.7-4.8
	Btype: Compression ratio of 15% mm 10.6-10.7 5.3-5.4
When the compression rate is 10% mm 11.25-11.3 5.65-5.7	
Dimensions	Diameter 115mm, height of about 110mm
Quality	10kg



ZL -3029 Glow Wire Test Chamber

Technical Parameters :

Standard:

IEC60695-2-1, IEC60695-2-10, IEC60695-2-11, IEC60695-2-13, UL746A, IEC829, DIN695, VDE0471. (GB/T5169.10-2006~GB/T5169.13-2006).



Glow wire temperature	adjustable continuous within the range of 500~1000°C, the resolution of temperature is $\pm 2^{\circ}\text{C}$
Glowing time	0.1~999.9s, $\pm 0.1\text{s}$ (time range is adjustable)
Burning time	0.1~999.9s, auto record and manual pause
Flame chilling time	0.1~999.9s, auto record and manual pause
Glow wire pressure on test specimen	$1 \pm 0.2\text{N}$. Limiting pressure depth is 7mm
Glow wire	diameter is 4mm include nickel (80%) and chromium (20%) which made in specific dimensions
Thermoelectric couple	$\phi 0.5$ armored nickel & chromium/ nickel-chromium wire, K degree
Auto break away	While reaching specified glowing time, test specimen will break away from glow wire automatically
Working power supply	AC220V/50HZ and less than 500W
Equipment dimension	W1100mm x D700mm x H1300mm

ZL -3030 Small Size Air Bag Burning Resistance Testing Machine

Technical Parameters :

Standard:

AGB8410-2006,ISO379,ASTM D5132,TL1010,GM6090M,DIN7520,GM9070P,FMVSS 302,JIS D 1201,JASO M403,ISO 3795,ASTM D5132



1. Chamber adopts mirror stainless steel plate made.	
2. Ten pieces ventilation holes with ID 19mm are designed at the bottom of the chamber, 13mm ventilation slots are around the walls.	
3. Two pieces U-shaped anti corrosion metal specimen holders with 361Lx100W mm.	
4. Burning time and stop burning time can be set within 0-99.99 S/M/H.	
5. Burning lamp nozzle ID	9.5mm, 38mm flame height, adjustable, center of nozzle is below the middle of free end 19mm.
6. Source	natural gas/gas
7. Metal comb	110mm long, 7-8pcs smooth crenates every 25mm interaval.
8. Steel rule	400mm long, 1.0mm accuracy
9. Thermometer	150°C, ±1°C accuracy.
10. Power supply	AC 1 phase 220V 50/60Hz 500W

ZL-3038 Plastic Films, Rubber/Paper Coefficient Of Friction Tester

Technical Parameters :

Model	ZL-3038
Load range	0~5 N
Accuracy	0.5%
Stroke	70 mm, 150 mm
Slider weight	200g (standard) Remark: The machine support any slider weight test
Test speed	100mm/min
Environmental requirement	Temp 10C~40C Humi 20% RH~70%RH
Power	AC 220V 50Hz
Machine demension	400(L)x300(B)x180(H)mm
Weight	10Kg



ZL-3039 Plastic Film Shrinkage Tester

Technical Parameters :

Standards:

ASTM D2732, ISO 11501 and GB/T 13519.

Model	ZL-3039
Specifications	Plastic Films Shrinkage Tester
Specimen Size	≤140 mm x 140 mm
Temperature Range	Room temperature ~ 200°C
Accuracy	±0.3°C
Power Supply	AC 220V 50Hz
Instrument Dimension	440 mm (L) x 370 mm (W) x 310 mm (H)
Net Weight	24 kg



ZL-3040 Electric Izod Impact Specimen Notch Sample-making Machine

Technical Parameters :

Model	ZL-3040
Table stroke	>160MM
Blade feeding speed	30mm/min
Sample type	I type
Notch type	according to the specifications of the blade.
Feeding amount	according to the standard.
External dimension	600mm×270mm×300mm
Supply voltage	220V, single-phase three wire system.



ZL-3043 Glove cut tester

Technical Parameters :

Model	ZL-3043
Weight quality	5N±0.05N
Cutting blade	Φ45±0.5 mm
Cutting stroke	50mm
Cutting speed	10cm/s
counter	1 ~ 99999.9
Dimensions	550×350×350
Instrument weight	80kg
power supply	AC 220V



ZL-3044 High Precision Thermal Conductive Tester



1.thermal conductivity range and accuracy	0.00001 ~ 3W/mk, can be measured accurately to 0.1mw/mk 0.001 ~ 300W/mk
2, measurement accuracy	1%.
3, the sample size	50 * 50 ~ 300 * 300 (mm). Special size can be customized
4, can test solid materials, powder materials	
5, measurement time	15-20min.
6, hot surface temperature and control	room temperature -199.9 C (standard configuration), room temperature -499.9 degrees Celsius, according to user requirements to determine a higher temperature. Flat heater, two-way SCR control, temperature control accuracy of 0.1 degrees Celsius
7, the surface temperature and control	0-99.9 C (standard), -10-99.9 C, according to the requirements of users can determine the lower temperature. Cold adopts water cooling, to ensure the surface temperature stability (precision constant temperature water tank, temperature adjustable), temperature control accuracy of 0.1 degrees.
8, the sample using the computer precision pressure clamping,pressure range 0-1000N, resolution 0.1N.	
9, sample thickness automatic measurement, 0-50mm, resolution 1um	
10, the use of imported heat flow meter, stable and reliable performance	
11, the whole process of the use of computer automatic test and print storage experimental data	

ZL-3045 Linear Abrasion Tester

Technical Parameters :

5 kinds movement distance optional:	Standard mobile distance 0.5", 1", 2", 3" and 4", can be customized special mobile distance
2~75 times/min, adjustable speed	
Can be set up test program:	Can set back and forth times, maximum 999,999 times (note, that the grinding head rubber during this period may need to change)
Can choose load:	Standard load 350g~2100g (standard configuration: 3 pieces 250g farmar)



ZL-3046 Environmental Stress Cracking Testing Machine

Technical Parameters :

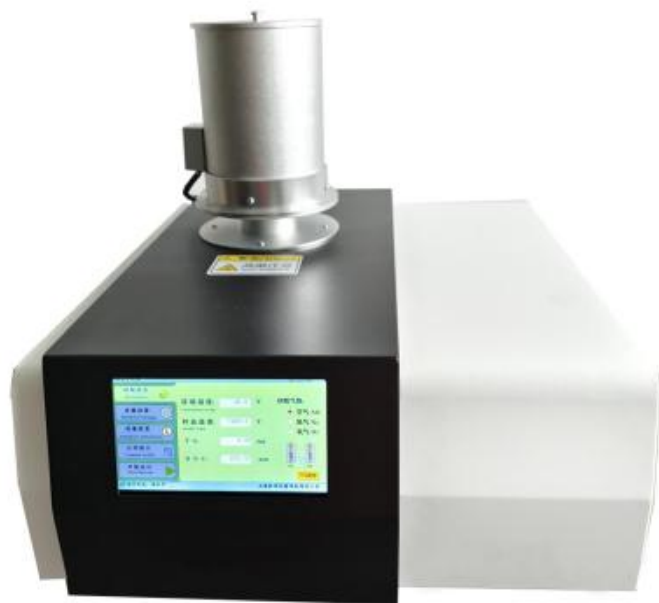
Model	ZL-3046
power	220V
sample specifications	length 38 ± 2.5 mm, width 13 ± 0.8 mm, high 1.75-3.00 mm
notch depth	0.3-0.65 mm
he temperature adjustable range	room temperature -100 °C
temperature control accuracy	± 0.5 °C
liner size	420 * 305 * 375mm (L * W * H)
Dimensions	605 * 330 * 610mm (L * W * H)
heating power	3KW



ZL-3047 Differential Scanning Calorimeter

Technical Parameters :

DSC	Differential scanning calorimeter
DSC range	0~±600mW
Temperature range	room temperature~
Heat-up rate	0.1~100°C/min
Temperature resolution	0.01°C
Temperature fluctuations	±0.01°C
Temperature reproducibility	±0.1°C
DSC accuracy	0.01mW
DSC sensitivity	0.001mW
Temperature control method	Heating up and constant temperature (automatic control of the whole program)
Curve scan	Heating up the scan
Air control	The instrument switches automatically
Display mode	The 24bit color 7-inch LCD touchscreen display is shown
Data interface	Standard USB interface
Instrument standards	Equipped with standard substances (tin), the user can correct the temperature and thermal enthalpy
Note	All technical indicators can be adjusted according to the user needs



ZL-3048 Plastic Capillary Rheometer

Technical Parameters :



Item	ZL-3048A	ZI-3048 B	ZL-3048C
Test capacity	5kN	10kN	20kN
Test speed	0.005-500 mm/min		
Load accuracy	±0.5%		
Load resolution	100000 Yards		
Stroke accuracy	±0.5%		
Deformation accuracy	±0.5%		
Deformation resolution	0.01mm		
Dynamic speed ratio	1:40,000		
Max. Test temperature	400°C can be custom to 500°C		
Temperature control	PID control, resolution of 0.1 ° C, the degree of error <± 0.5 ° C		
Heating rate	1 --- 10 ° C / min, continuously adjustable, and rapid heating		
Temperature accuracy	<± 0.5 ° C		
Temperature resolution	0.1°C		
Barrel diameter	12 mm (15 mm, 9.5 mm optional customization)		
Barrel length	200 mm (other lengths acceptable customized)		
Barrel Material	tungsten carbide		
Test bore	electric heating test chamber, the swappable cartridge		
Pressure Sensor	Capacity	500 bar	1000 bar
	Accuracy	< 0.25%	
	Material	Stainless steel, corrosion resistant, high temperature	
Capillary rheometer	Mouth membrane materials	tungsten carbide	
	Size (L/D)	5/1、 10/1、 20/1、 40/1 (can be do other size 1.5/1、 2.5/1、 3/1、 5/1) mm	
Plug diameter:	φ11.28 -0.012mm-0.05mm		
Plug area	1cm ²		
Test modes	constant speed, constant voltage, transformer, variable speed, temperature gradient mode		
Software	ZL SYSTEM		
Power	220V, 50/60Hz, 8A	220V, 50/60Hz, 12A	
Weight	200 kg		
Accessories	manual cleaning tool set		

ZL-3049 Energy Dispersive X-ray Fluorescence (XRF)

Technical Parameters :



1	Dimension	650mm*450mm*350mm
2	Computer(Integrated)	Intel(R) Celeroncpu1.6GHz, RAM:2GHardware 60G Display: 10inch
3	Sample cabinDimension	280mm*280mm*200mm
4	Weight	About 32Kg
5	Working AmbientTemperature	15-30°C
6	Working AmbientHumidity	≤85% (Nodew)
7	CCDPixel	5Mega-pixel
8	Sample	Solid、Liquid、 Powder
9	TestableElements	S-U
10	Collimator	Facula φ1mm、 3mm、 5mm(SoftwareAutomatic Option)
11	Minimum Detectability	Cd/Cr/Hg/Br≤2ppm、 Pb≤5ppm、 Cl≤60ppm
12	TestingDuration	100-200s(Software AutomaticAdjustment)
13	Optimum Resolution	145±5eV
14	Input Power	AC220V±10%, 50Hz(Suggest Purifying Regulated PowerSupply)
15	Rated Power	128W
16	Radiation Protection Standard	GB18871-2002GBZ115-2002

ZL-3059 Vertical Injection Moulding Machine

Technical Parameters :



Type	Model	Unit	ZL-3059-20	ZI-3059-25	ZL-3059-28	ZL-3059-30
Injection system	Screw diameter	mm	20	25	28	30
	Injection pressure	Kg/cm ²	1715	1164	816	886
	Theoretical shot volume	cm ³	31	49	56	70
	Max.injection weight(PS)	g	29	60	80	84
	Injection rate	cm ³ /sec	20	30	30	68
	Screw stroke	mm	100			
	Max.screw speed	rpm	0-155			
	Nozzle contact force	tons	2.0			
	Nozzle retraction stroke	mm	133		140	165
	Number of temperature control	-	1+2			
	Material hopper capacity	L	15		15	20
Clamping System	Clamping Force	tons	15		20	30
	Opening Force	tons	7		7	6.5
	Platen Size	mm	450*290		460*310	520*370
	Distance Between Tie Bare	mm	280*140		303*153	350*205
	Min. Mold Height	mm	140/80		160/100	160/100
	Opening Stroke	mm	160		180	180
	Max. Open Daylight	mm	300/240		340/280	340/280
	Ejector Force	tons	1.3		1.3	1.3
	Ejector Stroke	mm	35		35	35
Sliding System	Slide Stroke	mm	-		-	-
	Max. Mold Weight	kg	-		-	-
	Station Clearance	mm	-		-	-
Hydraulic Power System	Max. Hydraulic Pressure	Kg/cm ² (m Pa)	140		140	140
	Pump Output	L/min	23		23	26
	Oil Reservoir Capacity	L	80		80	100
	Cooling Water Consumption	/hr	400-600		400-600	400-600
	Pump Motor Power	KW	3.5		4	4
	Barrel Heating Power	KW	2.2		2	2.7
	Total Wattage	KW	5.5		6	6.2
Others	Machine Weight	tons	0.68/0.8		0.68/0.8	1.1/1.3
	Machine Dimensions L*W*H	mm	1550*900*2350		1400*900*2200	1570*950*2350
	Shipping Weight	tons	0.8/0.9		0.88/0.9	1.3/1.5
	Shipping Measurements L*W*H	mm	1750*1050*2400		1500*1000*2300	1670*1050*2450

ZL-3051 Silicone Cutting Machine

Technical Parameters :

Model	ZL-3051
Practical knife width	550mm
Cutting thickness	less than 10mm
Feeding length	1—999mm
Cutting speed	130 strips/min
Knife material	stainless steel
Motor model	180w/two-phase
Adjustment method	touch screen adjustment
Dimensions	830mm*1050mm*1050mm
Machine weight	150kg
Feeding method	stepper motor feeding
Power supply voltage	220V/50HZ, single phase
Operating noise	less than 60 decibels



ZL-3068 Rubber Slicing Machine

Technical Parameters :

Model	ZL-3068
1. Workbench width	150mm
2. Slicing thickness	12mm
3. Planer width	50mm.
4. Cutting blade	150×110×6mm
5. Power supply voltage	380V 50Hz
6. Dimensions	580×520×1080mm



ZL-3061 Condom Bursting Tester



Model	ZL-3061
Pressure range	0-99.99KPa
Pressure accuracy	0.01Kpa
Volume range	0-100dm ³
Volumetric accuracy	0.01dm ³
Air source pressure	0.6mpa ~ 1MPa (air source user-provided)
Air interface	6 mm pu tube
Overall dimension	300mm (length)× 350mm(width)×430mm (height)
Power source	AC 220V 50Hz
Net weight	18 kg
Standard configuration	host, micro printer
Optional parts	professional software, communication cable
Note	air source (user-provided)

ZL-3062 Dupont Impact Tester

Model	ZL-3062
Applicable materials	Paint test piece/plastic test piece
Drop height (selection)	50~500mm, interval 50mm;.50~1000mm, interval 50mm
Heavy hammer	300, 500, 1000, 2000 (g);
Dupont impact tester impact cone radius Punch radius	1/2, 1/4, 1/8, 1/16, 3/16in each a total of five options
Mold base radius	1/2, 1/4, 1/8, 1/16, 3/16in, each with five options in total
Volume (W*D*H)	58*30*82cm; /58*45*128cm
Weight	about 45kg; /about 60kg



ZL-3065 Lab Blowing Film Extruder Machine

Technical Parameters :

A.Device Description	
1.Name	Laboratory film blowing machine
2.Model	ZL SCM25-PLC
3. Classification	Blown film
4. The overall dimensions (L*W*H)	2100*650*1900mm
5. Weight:	270KG (net weight)
6. Total power	8.0KW(approximately 5.0KW in actual use)

B.Using condition	
Electric resource	220V, 1PHASE, 50HZ
Plastic raw materials	PE(except the special material)
Bowing width	100-150mm
Capacity(Theoretical value)	0.5-2.0kg/h
Minimum single usage	200g
Bowing thickness	0.01-0.10mm
Whole machine control method	PLC

3.Blowing Machine	
Blowing width	100--150mm
Traction Roller diameter	Φ 85mm
Traction Roller length	300mm
Active roller	Chrome roller
Passive roller	Anti-static roller
Traction Roller drive	Independent drive



ZL-3016B Charpy Impact Tester

Meet standards: ISO 180-2000, ASTM D256-2010 JB/T 8761-1998

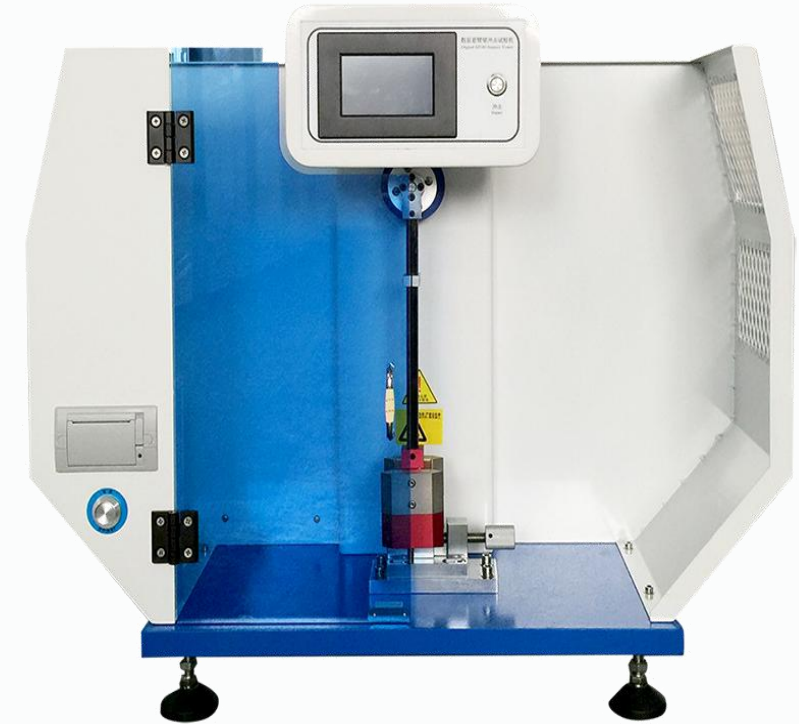
Model	ZL-3016	
Charpy energy	5	50
	1J、2J、4J、5 J	7.5J、15J、25J、50J
Impact velocity	5	50
	2.9m/s	3.8m/s
Pendulum elevation	150°	
Center-to-center distance of the pendulum sample	5	50
	230mm	395mm
Pendulum torque	Pd1=0.5155N.m	Pd2=1.0311N.m
	Pd4=2.0622N.m	Pd5=2.5777N.m
	Pd7.5=3.8662N.m	Pd15=7.7324N.m
	Pd25=12.8888N.m	Pd50=25.777N.m
Jaw bearing spacing	40mm、60mm、70mm、95mm	
Supporting cutting edge radius	R=1mm	
Impact of the blade angle	30°±1°	
Impact of the blade radius	R=2mm	



ZL -3016D IZOD Impact Tester

Meet standards: ISO 180-2000, ASTM D256-2010 JB/T 8761-1998

Model	ZL-3016D	
energy	5.5	22
	1、 2.75、 5.5 J	11、 22 J
Impact velocity	3.5m/s	3.5m/s
Pendulum elevation	150°	
Center-to-center distance of the pendulum sample	335mm	335mm
Pendulum torque	PL1=0.53590 Nm PL2.75=1.47372 Nm PL5.5=2.94744 Nm	PL11=5.8949Nm PL22=11.7898Nm
Impact of the blade radius	R=22±0.2mm	
Sample Size Type	80mmX10mmX4mm 63.5mmX12.7mmX3.2mm 3.5mmX12.7mmX6.4mm 63.5mmX12.7mmX12.7mm	80mmX10mmX4mm 63.5mmX12.7mmX3.2mm 63.5mmX12.7mmX6.4mm 63.5mmX12.7mmX12.7mm



ZL-3015 Thermal Deformation Vi-cat Softening Point Tester

Technical parameter:

Control temperature	Room temperature -300°C
Upraise temperature speed	(12±1)°C/6min (5±0.5)°C/6min
Temperature precision	±0.5°C
Max.temperature control accuracy	±1°C/6min (HDT)
	±0.5°C/6min(VST)
Deformation Max. measure	1mm (VST)
	0.36mm(HDT)
Deformation resolution	0.01 mm
Sample frame	3 sample frame automatic up and down
Heating medium	Cyclamen silicon oil (viscid degree 200)、
	Transformer lead oil (prepared by customer)
Cooling method	Natural cooling(Medium temperature is higher than 150°C)
	Water cooling or nature cooling (Medium temperature is lower than 150°C)
Quality of load rod and pallet	68±1g
Heating Power:	4 kw
Display	PC + software
Power	220V+10%, 15A, 15HZ



ZL-3007A Impact rebound tester

Meet standards: DIN53512 ISO4662

Technical parameter:

Instruction Range	0~100 %
Marking scale	1 %
Adjustable range of specimen thickness	0~60mm
Scale mark	1mm
Dimension	62*12*33cm
Weight	38kg



ZL-3007B Vertical Flexible Tester

Meet standards: ASTM-D2632

Model	ZL-3007B
Height of fall	400mm
Weight hammer	28g
Volume	25×15×52.5cm
weight	8kg



ZL-3006 Rubber Fatigue Testing Machine

Specifications:

Distance of the specimen	Be free to adjust
Speed	5Hz
Test temperature range	RT
Test the elongation	1.6 ~ 2.4
Test specimen	Dumbbell-shaped specimen
Test stroke	13mm - 70mm
Folder specimen	24
Meter recorder	0~999999s
Voltage	3-phase, $380 \pm 10v, 50/60$ Hz



ZL-3010 Oxygen index tester

Meet standards: ASTM D 2863, ISO 4589-2

Main technology:

Combustion tube and the base	quartz glass, diameter 95mm, the total height of 450mm (two sets).
The oxygen concentration adjustment range	0 ~ 100%; Resolution: 0.1%;
Response time	<3s
Burning time	0-999.9S, accuracy 0.1S
Gas temperature	0-99.9 °C, accuracy of 0.1 °C
Working pressure	0.1MPa ~ 0.3MPa;
Gas	industrial oxygen and nitrogen (customer self);
Working power	AC220v; 50Hz; 50W



ZL-3021 Pipe hydraulic pressure burst tester

Pipe pressure burst test machine is used for long-term pressure and plastic pipe and composite pipe burst test test equipment, the product complies with ISO1167, GB / T6111 "Fluid Plastic Thermoplastic Pipe endurance testMethod ", and the applicable standards of the relevant materials. Can be applied to PVC, PE, PPR, ABS, and composite materials within the pressure detection.

Technical parameter:

Pressure range	0 ~ 16MPa (arbitrary setting)
Pressure display accuracy	0.01MPa
Control accuracy	upper limit + 2%, lower limit -1%
Temperature control range	room temperature ~ 95 °C
Temperature display range	± 1 °C
The time display range	0 minutes to 9999.59 hours
Time display accuracy	1 second
The largest sample diameter	630mm (tank size according to user requirements)



ZL-3028 Horizontal and vertical flammability tester

Meet standards: UL 94 EN 60695-2-11

Technical parameter:

Model	ZL-3028
Testing room area	0.5m ³
Timing accuracy	1s
Simple size requirements	Length:125±5mm,Thickness:3.0±0.2mm Width:3.0±0.2mm
Specification	Tube length100±10mm,Diameter:9.5±0.5 mm
Titled	20°45°, 90°
Height of burner blue flame	20 mm(Adjustable)
Time account	0~9999 times
Timer	0~99.99s
burner when necessary to manually lift in the vertical direction	
Main configuration as follows	
Host box(vertical burning ,burning one level)	
Burning in part by the Bunsen burner, solenoid valve, high pressure ignition, gas pipes, regulators etc.	
inner control box by the fire-breathing, Minting timer, counter etc. burning	



ZL-6004 Programmable Constant Temperature And Humidity Chamber

Meet standards:GB/T2423.1-2008 GB/T10589-2009 GB/T2423.2-2008

This machine simulates various environmental conditions to test the performance of various products and raw materials in terms of heat resistance, humidity resistance, dryness and low temperature resistance

Technical parameter:

Temperature Range	-70°C~+150°C
Humidity Range	20%~98%R.H.(10%-98%R.H/5%~98%R.H for special selection conditions)
Control System	TEMI880 touch screen controller
Inner box size	40L/60L/80L/150L/225L/408L/800L can be customized
Temperature Fluctuation	±0.5°C
Humidity fluctuation	±2.0%R.H.
Temperature Deviation	±1.0°C
Power supply	1Φ 220VAC±10% 50/60Hz & 3Φ 380VAC±10% 50/60Hz
Compressor	France "Tecumseh" brand



ZL-6009 Aging And Yellowing Resistance Tester

Meet the standard: ASTM D1148 GB/T16585-1996
GB14522-93 GB/T16422.3-97

Mainly simulates the color change caused by sunlight radiation or the environment of the container during transportation, resulting in product defects.

Inner box size	50*60*50
Temperature selection	Normal temperature room temp.~200°C
Temperature Display	0.1°C.
Control Accuracy	±3°C.
Distribution accuracy	±1%1°C (at-100°C) .
Time memory	0-999 hours, power failure memory type, including buzzer
Control method	Automatic algorithm controller
Turntable speed	Dia.45cm, 10R.P.M. ±2R.P.M
UV light source	UV300W bulb
Heating method	Hot air return circle
Safety protection	EGO over-temperature power-off indicator, safety overload switch ammeter
Manufacturing material	Internal SUS#304 stainless steel plate, external advanced baking paint



ZL-6008 QUV UV aging testing machine

Meet standards: ASTM G53-77, ASTM D4355

Technical parameter:

Model	ZL-6008
Bulb number	UV Lamp 8, spare lamp :4
	ATLAS,UVA340,UVB313,UVC351)
Recorder	Option
Radiometer	Option
UV temperature	From 50 °C to 75 °C
Testing capacity	48 piece(75 x 150m m)
	50 piece (75 x 150m m)
Water and consumption	distilled water, 8 liters / day
Volume	137 x 53 x 136cm (W x D x H)
Weight	136kg
Power	1 φ , 120V/60Hz,16A or 230V/50Hz, 9A,1800W(max)



ZL-6018 Ozone-resistance testing machine

Meet standards: JIS K 6259 ASTM1149 ASTM1171 ISO1431 DIN53509

Technical parameter:

Model	ZL-6018
Ozone concentration	0~1000pphm adjustable
Relative humidity	60%RH above
Temperature	RT+10 ~ +70°C
Ozone produced mode	Ozone generator or UV absorption method
Inside air velocity	over 2 feet/sec
Degree of ozone concentration fluctuation	10%
Inside size	500×500×600mm
air flow	A.0-6 cfm; B. 10-20 cfh
weight	250kg
power	1 φ ,AC220V,15A
accessories	tensile fixture 6 groups



ZL-6014B Industrial Ovens

This machine uses high temperature for drying and heating, which can also oxidize microorganisms, denature proteins and kill residual microorganisms within a certain period of time.

Technical parameter:

Model	6014B- I	6014B- II	6014B-III	6014B- V	6014B-VI
Power	220V 50Hz				
Temperature	50°C - 200°C				
Fluctuation	±1°C				
Tracking Alarm	+ 5°C				
Power consumption	500W	500W	800W	1500W	2000W
Internal dimensions (L*W*H) mm	250×250×250	300×300×275	415×370×345	554×370×523	600×550×600
	535×440×435	585×490×460	700×560×530	840×560×710	885×740×790

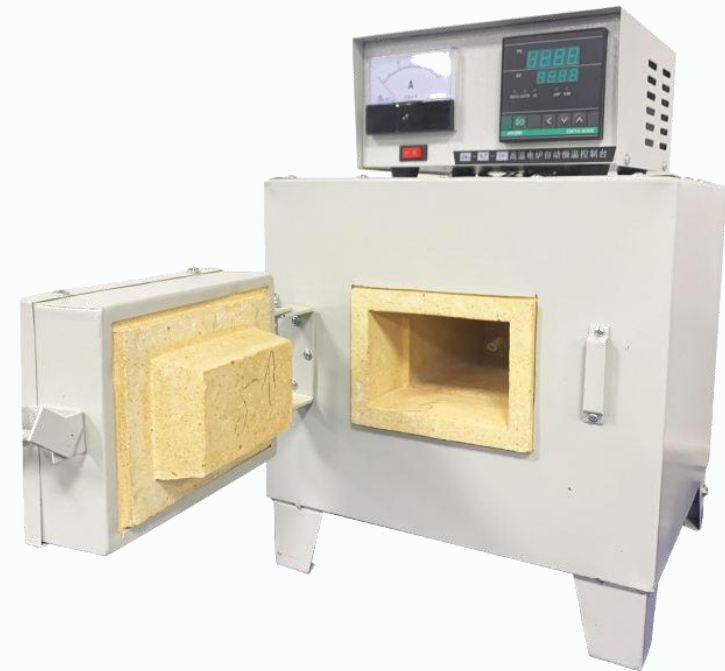


ZL-1026 High Temperature Muffle Lab Furnace Manufacturer

High temperature muffle lab furnace used on analysis element and measuring the function of heating and heating treatment of General small steel hardening, annealing, tempering. High - temperature furnace can also be used for metal, ceramic sintering, dissolving, analysis of high temperature heating

Technical parameter:

Electric power	220V
Power rating	5Kw
Power temperature	1200°C
Size of working areas	200*300*120mm
Around outer size	480*460*630mm
Heating elements	silicon carbon stick
Temperature control	thermonuclear(WREU)
Support table	Theorist surge console
Electric power	220V
Power rating	5Kw



ZL-1903B Solid Density Meter

Rubber, wire and cable, aluminum products, fibers, powder metallurgy, mineral rocks, fine ceramics, glass industry, metal products, fine ceramics, refractory materials, magnetic materials, alloy materials, mechanical parts, metal recycling, minerals and rocks, cement manufacturing, jewelry industry and other new material research laboratories.

Technical parameter:

Weighing accuracy:	0.005g
Maximum weight;	300g
Density Analysis:	0.001g/cm ³
Measure time	about 10 seconds
Type of measurement:	Solids (blocks, shaped parts, particles, floats)
Read directly;	weight density volume
Sensor;	Gold-plated ceramic
Standard interface:	RS-232
Optional;	printer
Packaging size; (length, width and height)	(45*24*46)mm
Weight; (gross weight)	7.5kg



ZL-1908A Halogen Plastic Moisture Tester

Suitable for research institutes, universities, inspection institutes, measurement institutes, enterprises and institutions, it is widely used in various industries such as plastic, grain, feed, powder, tobacco, paper, food (dehydrated vegetables, meat, noodles, flour, biscuits, pies) , aquatic products processing), tea, beverages, grains, chemical raw materials, pharmaceuticals, textile raw materials, etc., to test the free moisture contained in the samples

Technical parameter:

Heating mode	Automatic, timed, manual
Shutdown mode	0 ~ 99 minutes (1 minute interval)
Set time	Ring halogen lamp
Heating source	40°C ~ 200°C
Heating temperature range	Φ102mm
Weighing pan size	strain gauge sensor
Sensor	LCD liquid crystal display
Monitor	Thermal printing (directly print out the moisture value and solid content)
Communication Interface	Standard RS232 communication interface can be connected to printers, PCs and other peripheral devices
Dimensions (mm)	310*205*200(L*W*H)

